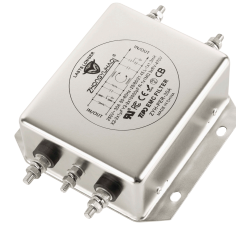


ZYH-P系列防雷脉冲电源滤波器
ZYH-P series against power surges pules filter



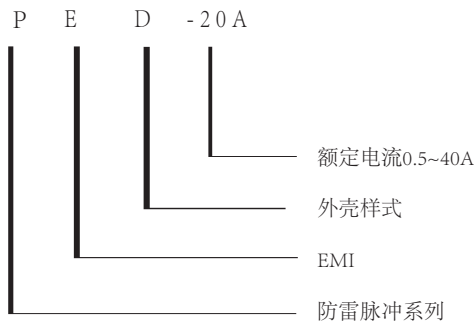
ZYH-P 系列: ZYH-P Series

特点和应用: Features and Applications

有较强的防浪涌和脉冲的能力并能够承受多次浪涌的冲击
A strong anti-surge and pulse and the ability to withstand shocks has succeeded
对于浪涌信号反映的时间小于10纳秒
surge signal reflected in the little time less than 10ns
产品使用寿命较长, 高于市场上同类产品1到1.5倍
Longer product life, higher than the market similar products from 1 to 1.5 times

适用于电源前级系统的滤波和瞬态过压保护
(注意:在承受超大容量的瞬间极端放电时, 可能产生爆裂或者短路)
Apply to the former class power system recovery and transient overvoltage protection (Note: in an extreme discharged bear mega-capacity, burst or short-circuit may have)

订购信息: Ordering Information



可选型号 Available Part Numbers

型号 Type ZYH-	额定电流范围 Rated Current (A)	绝缘电阻 Insulation Resistance	端接方式 Terminal	
			入Input	出Output
PED	20 - 40	≥ 300		
PES	20 - 40	≥ 300		
PER	20 - 40	≥ 300		

规格: Specifications

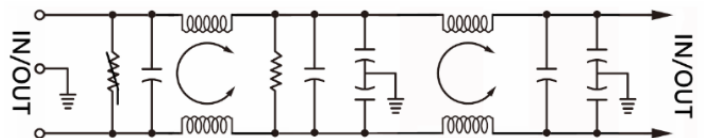
每条线路对地的最大泄漏电流:
Maximum leakage current each Line to Ground:

	PED	PES	PER
@250VAC 60Hz:	≤ 25mA	≤ 25mA	≤ 25mA
@380VAC 50 Hz:	≤ 30mA	≤ 30mA	≤ 30mA

Hipot额定值 (一分钟): Hipot rating (one minute):

线路对地: Line to Ground:	1800VAC
线对线: Line to Line:	1500VDC
工作电压: Rated Voltage (max.):	380VAC/440VAC
工作频率: Operating Frequency:	50/60HZ
额定电流: Rated Current:	0.5-40A

电路原理图 Electrical Schematics

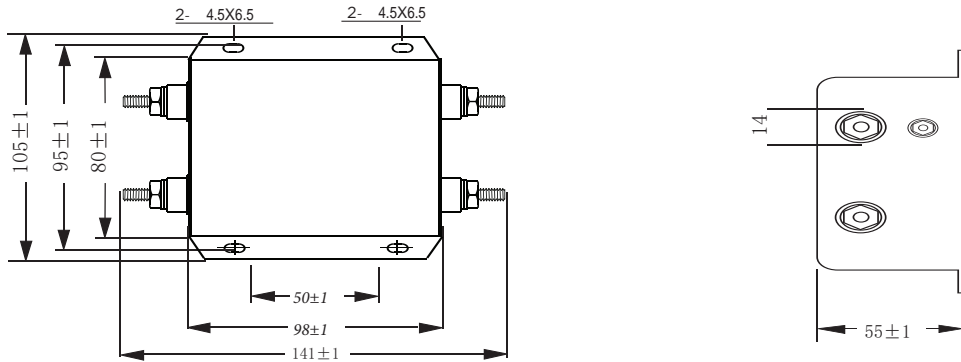


ZYH-P系列防雷脉冲电源滤波器
ZYH-P series against power surges pules filter

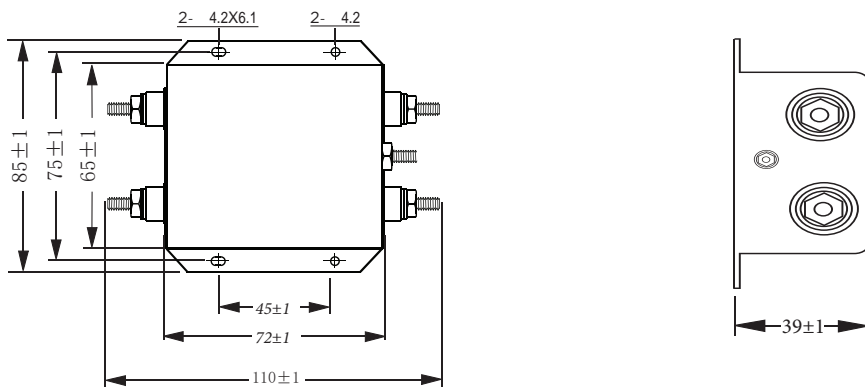
ZYH-P系列：ZYH-P Series

外壳样式：Case Styles

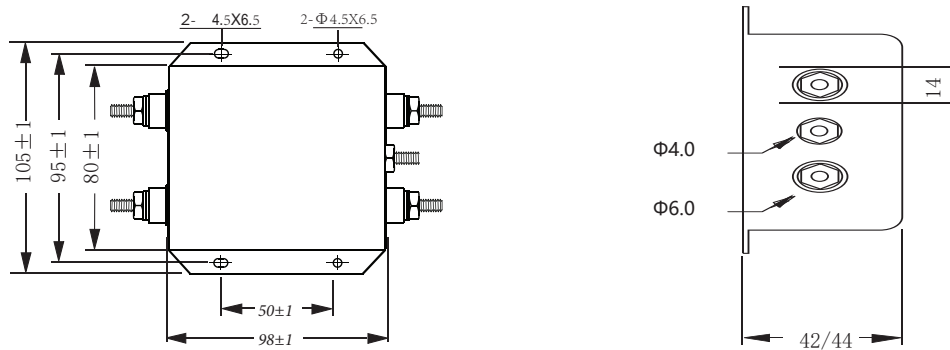
PED外壳样式：PED Case Styles



PES外壳样式：PES Case Styles



PER外壳样式：PER Case Styles



ZYH-P系列 : ZYH-P series

性能参数

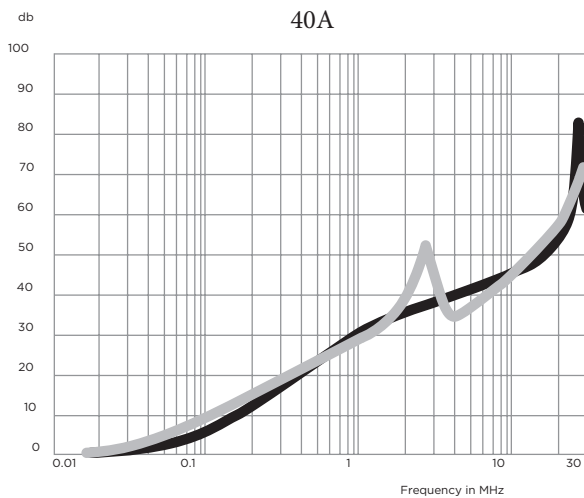
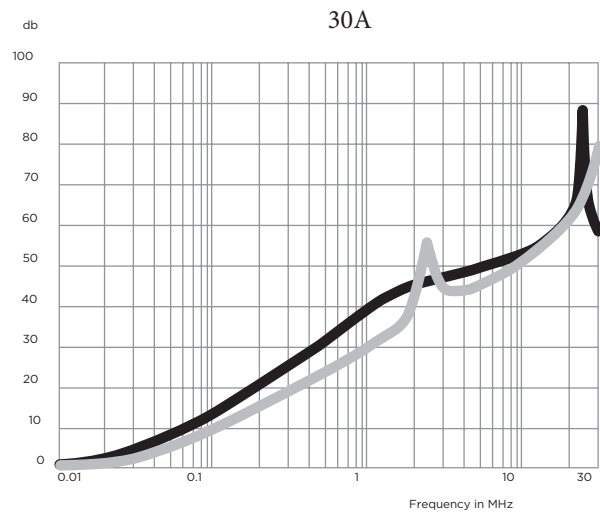
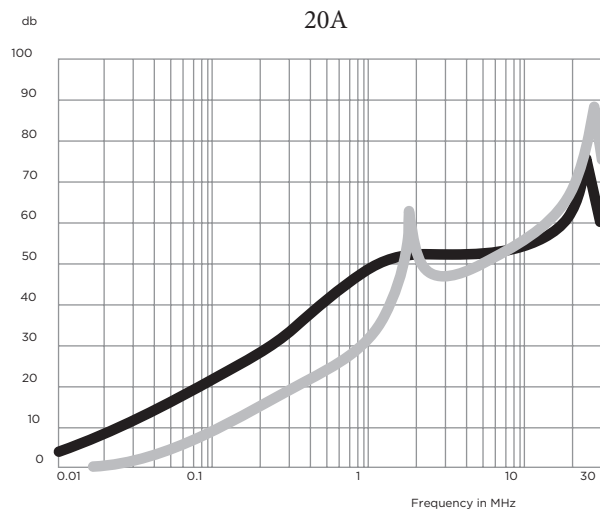
Performance Data

典型插入损耗

Typical Insertion Loss

在封闭的50欧姆系统中测量

Measured in closed 50 Ohm system



最小插入损耗 Minimum Insertion Loss

共模/不对称 (线对地)

Common Mode / Asymmetrical (Line to Ground)

Part No.	Frequency -MHz						
	.01	.05	.1	.5	1	5	10
20A	13	23	37	43	47	44	49
30A	5	14	28	34	43	43	48
40A	1	7	19	25	35	36	52

差模/对称 (线对线)

Differential Mode / Symmetrical (Line to Line)

Part No.	Frequency -MHz						
	.01	.05	.1	.5	1	5	10
20A	1	10	20	26	42	45	65
30A	1	10	20	23	38	41	65
40A	1	10	20	23	29	34	56